

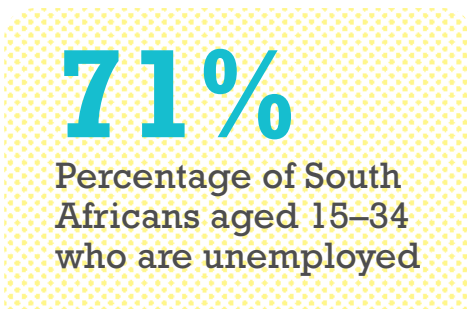
# The Labour Market at a Glance

The Marikana massacre in August, and the farm worker strikes in the Western Cape Winelands in November and December, put the position of workers at the centre of the public debate, probably more so than any national strike has done in recent memory. The social instability provided a glimpse of what may increasingly become a daily reality if the country does not succeed in arresting conditions where a poor education reinforces the oversupply of low-skilled and unskilled workers, which, in turn, exerts downward pressure on wages for those lucky enough to find employment. Unemployment edged higher to 25.5 per cent during the third quarter of 2012. More worrying is the fact that 71 per cent of the working age unemployed are 35 years and younger. This should serve as a stark warning that politicking over the means to provide young people with easier entrance to the labour market is done at the expense of the country's future.

## South Africa's vital labour statistics

Unemployment (2012, Q3)	25.5%
Unemployed young South Africans (15–34) as percentage total unemployed	71.0%
Number of employed ('000)	13 645
Number of unemployed ('000)	4 667
Not economically active working-age population ('000)	14 705
Employment absorption rate	41.3%
Labour force participation rate	55.5%

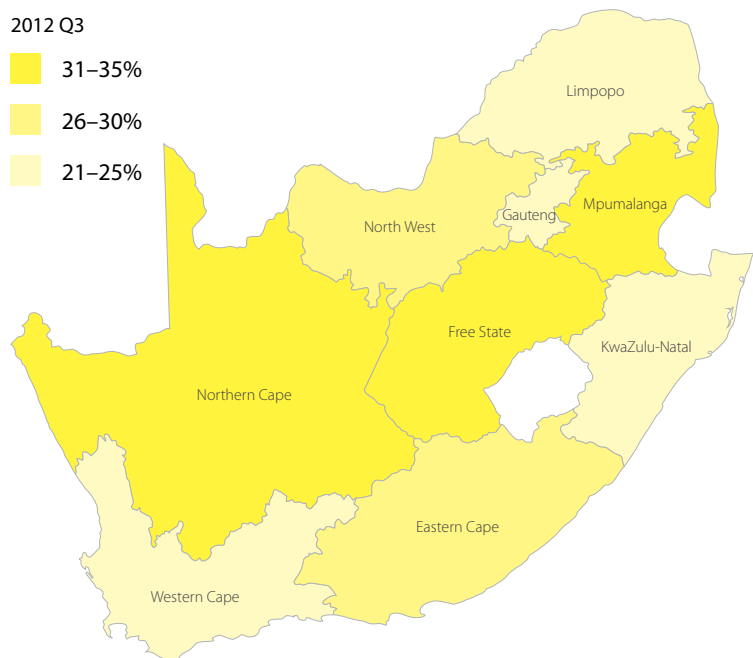
Source: StatsSA, 2012: Quarterly Labour Force Survey, 3rd Quarter



## South Africa unemployment by province (% 2012)

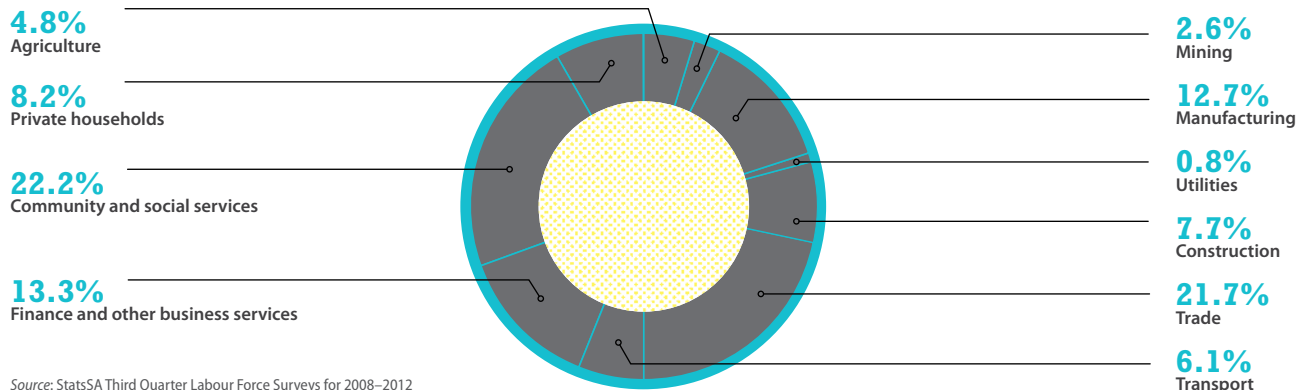
2012 Q3

- 31–35%
- 26–30%
- 21–25%



Source: StatsSA Third Quarter Labour Force Surveys for 2008–2012

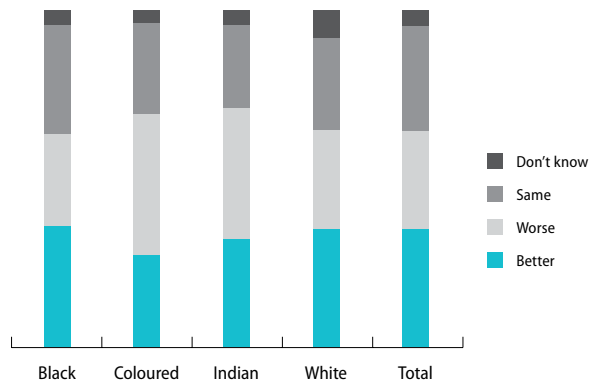
## Sector profile of employed South Africans ('000)



Source: StatsSA Third Quarter Labour Force Surveys for 2008–2012

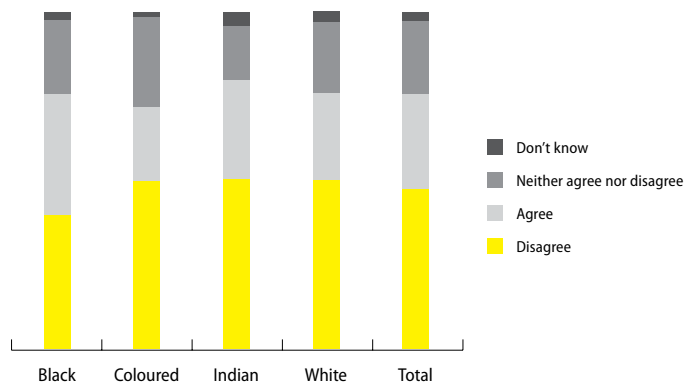
Whether you currently have a job or not, how do the chances of finding one compare to 12 months ago?

– IJR, SA Reconciliation Barometer, Round 9, April 2012



Is government doing well in getting young South Africans into jobs?

– IJR SA Reconciliation Barometer, Round 9, April 2012



Have employment equity policies been successful in creating a workforce that represents the South African population?

– IJR SA Reconciliation Barometer, Round 9, April 2012

